



HUB IP66/67 WATERPROOF IOT BOX

PRODUCT OVERVIEW

The Hub Series provides spacious, flexible enclosures ideal for IoT gateways, junction boxes, and DIN rail installations. Featuring certified dust and waterproof ratings (IP66/IP67), IK08 impact resistance, and UV-stable, fire-rated polycarbonate, these units deliver dependable performance indoors and outdoors.

Front-access screws and internal DIN rail mounts simplify installation and maintenance, while UK-based in-house customisation ensures your enclosure perfectly fits your project's requirements.



KEY FEATURES

Durable Material

Moulded from Polycarbonate (PC) material rated UL-94 V0 and UL-746 fl. Suitable for outdoor use with fire-safety, waterproofing, and UV-resistance.

IP66 and IP67 Rating

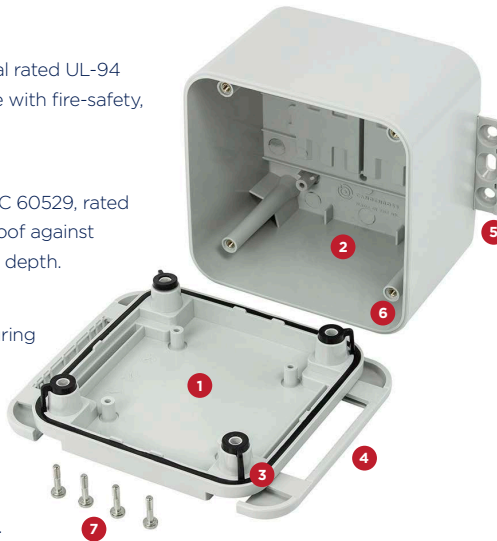
Certified and tested in accordance with IEC 60529, rated for complete dust protection and waterproof against powerful jets and immersion up to 1 meter depth.

IK08 Rating

Tested in accordance with EN60068, ensuring resistance against up to 5 joules of mechanical impact and shock.

Easy Maintenance

Front located screws for fixing lid to base for ease of component fitting and maintenance after unit has been mounted. Self-retained, slide out screw covers conceal screws on front.



Wall Mounting

Integrated bracket offers versatile surface mounting options including unique concealed mounting.

Pole Mounting

Metal pole mounting bracket available that fixes to existing mounting bracket on base. Made from stainless steel for poles of 60mm diameter or larger.

DIN Rail Installation

Two fixing holes in the inside of the base for internal DIN Rail mounting.

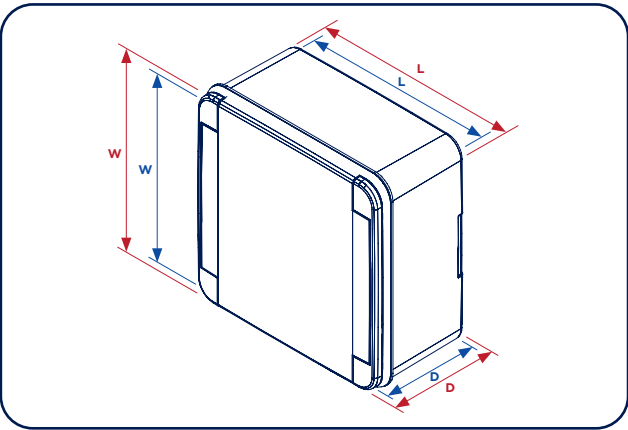
PCB Mounting

Four PCB mounting pillars inside the lid and base, suitable for 3mm thread forming screws and No. 4 self-tapping screws.

SPECIFICATION	
BASE MATERIAL	Polycarbonate (PC)
FLAMMABILITY RATING	UL-94 V0
OUTDOOR SUITABILITY	UL-746C fl
COLOUR	Light Grey (RAL 7035)
IP RATING (IEC 60529)	IP66 and IP67
IK RATING (EN60068)	IK-08
OPERATING TEMPERATURE	-40°C to +110°C
GWFI (IEC 60695-2-12)	960°C
GWIT (IEC 60695-2-13)	850°C
WALL THICKNESS	3mm

UNIT INCLUDES				
NO.	PART	PCS	MATERIAL	COLOUR
1	Lid	1	Polycarbonate	Grey
2	Base	1	Polycarbonate	Grey
3	Gasket	1	Silicone	Black
4	Screw Cover (Fitted)	2	Polycarbonate	Grey
5	Bracket (Fitted)	2	Polycarbonate	Grey
6	Brass Inserts (Fitted)	4	Brass	Natural
7	M3 Captive Screw	4	Stainless Steel	Natural

PRODUCT RANGE							
PART NUMBER	EXTERNAL DIMENSIONS (mm)			INTERNAL DIMENSIONS (mm)			WEIGHT (G)
	L	W	D	L	W	D	
CBHUB-01-GY	105	105	80	96	96	57	195.2
CBHUB-02-GY	162	162	80	152	152	57	348.2

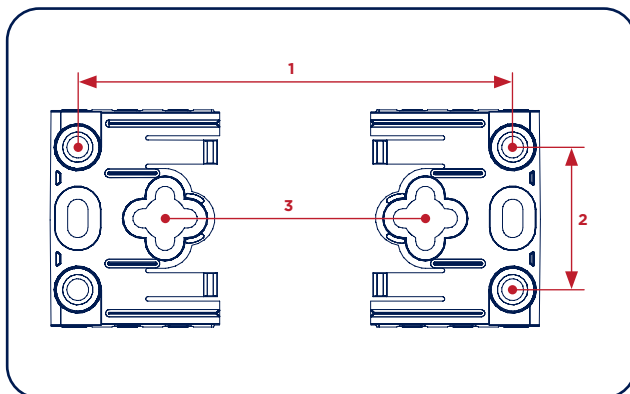




WALL MOUNTING BRACKET

Included wall mounting bracket that simplifies installation onto walls or surfaces and conceals screws.

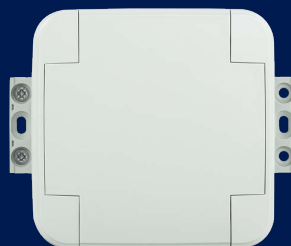
BRACKET FIXING HOLES (mm)			
PART NUMBER	1	2	3
CBHUB-01-GY	90	30	53
CBHUB-02-GY	145	30	108



MOUNTING GUIDE

Step 1

Open brackets into flanged position and screw one side.



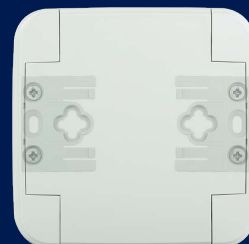
Step 2

Click to the side twice and screw opposite side.



Step 3

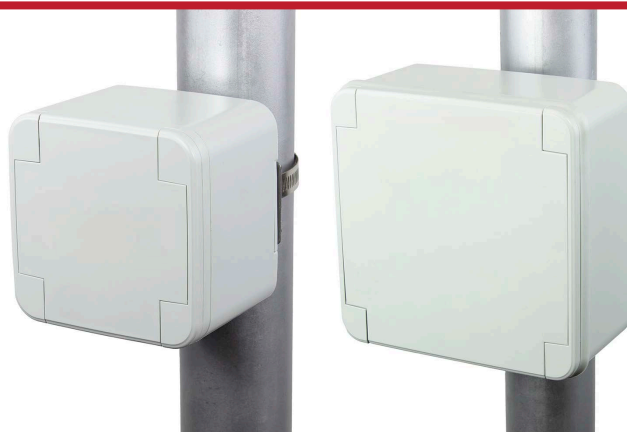
Click back once for concealed wall mounting. Repeat steps in reverse to remove the Node from wall.



POLE MOUNTING ACCESSORY

Available separately, enabling easy installation onto poles, essential for outdoor or elevated installations (excluding Jubilee clamp).

PART NUMBER	COMPATIBILITY	KIT INCLUDES	MATERIAL
CHDAPM_H01-KIT	CBHUB-01-GY	Horizontal Bracket Kit (for one enclosure)	Stainless Steel
CHDAPM_H02-KIT	CBHUB-02-GY		



APPLICATIONS/INDUSTRIES

Industrial Automation, Telecommunication Systems, Control Panels, IoT Networks, Smart Tech, Environmental Monitoring, Agriculture Sensor, Smart Monitoring, Occupational Sensor, etc.

IN-HOUSE CUSTOMISATION

Designed, moulded, and customised in-house in the UK from CamdenBoss. CNC machined cutouts, digital printing, and accessories like cable glands and pressure vents are all available.

CBHUB-01-GY | Deep PV Junction Box



CBHUB-02-GY | 5G Gateway



RELATED PRODUCTS

Node Series	X8 Series	X7 Series	X6 Series	73 Series	Cable Glands	Pressure Vents